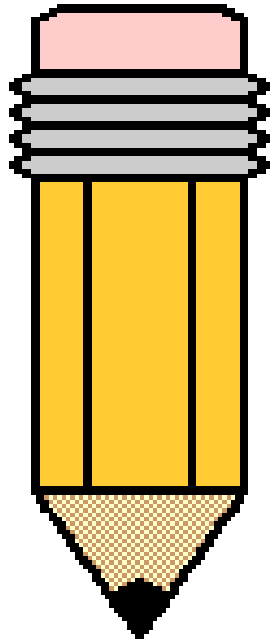




**Welcome  
to the  
Sayreville  
Middle  
School**



Your child is now a  
Sayreville Middle  
School student.

Things to know...

# Arrival/ Buses



- Students need to know their bus #.
- Check the *OUR SCHOOLS* booklet or the district website ([www.sayrevillek12.net](http://www.sayrevillek12.net)) for times and stops.
- Follow traffic patterns for AM drop-off. (7:00-7:40).
- Parent parking has been designated for PM pick-up. Spots are marked in **green**.
- Homeroom begins at 7:45. Please be on time.
- Students are only permitted to ride on their designated bus.

# Absent

- **Parents need to call the call out line at 732-525-5291 for absences. You will also receive a call from *Parentlink*.**
- **If your son/ daughter will be out for more than 3 days, please call the guidance department to request missed assignments. Guidance Extension: 5534**
- **An absentee note is required when students return to school.**
- **If your child has a chronic illness, you may want to let your child's teachers know and certainly the school nurse.**



# Lockers

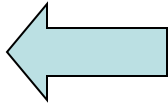
- Each student is given an individual locker.
- Please keep it clean. Stickers are not permitted.
- Each student is given a lock. Replacement fee for a new lock is \$4.00
- Students should keep their combination in a secure spot and should **not** give their combination to anyone.



It is the responsibility of the student to lock their locker.

# Locks

Left



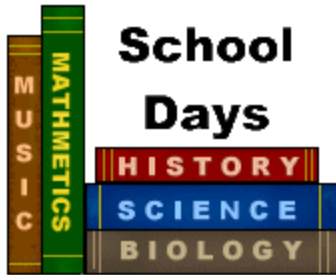
Right



Right



# Classes

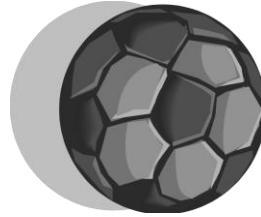


**Language Arts, Math,  
Problem Solving, Physical  
Education/Health, Science,  
Social Studies and Specials.**

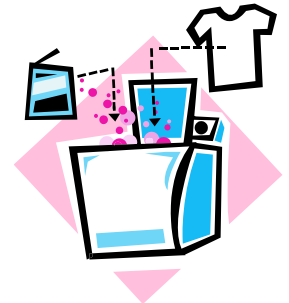
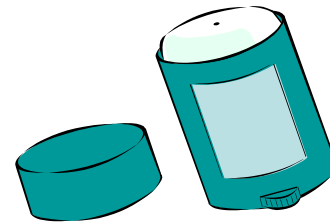
- Each teacher will provide the student with a recommended list of supplies for their class within the first few days of school. These supplies are only suggestions and are not mandatory. Recommended supply lists are also on the district website.
- Students are expected to get to class on time and be prepared.
- Students may carry only the “sling/string” or small tote bags in the hallways.



# Physical Education



- Students will have physical education class everyday, except for one marking period of health.
- Students are to have a change of clothes (T-shirt, shorts, sweatpants, sweatshirt) in their gym locker. Please remind them to take them home often to wash them. Baggies are suggested to put jewelry in during class since students are not allowed to wear it during physical education class.
- Students will be given a locker and lock in gym class. It is the responsibility of the student to lock his/her important possessions in their locker.



# “Specials”

- Study Skills (one marking period)
- Dramatic Arts (one marking period)
- Spanish (one marking period)
- Music Appreciation (one marking period)
- Instrumental Music (for specific students)

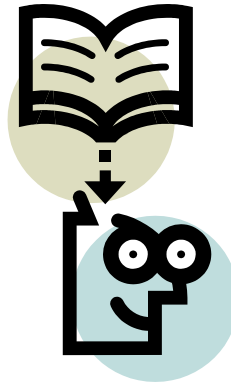


# Future Academics

## 7<sup>th</sup> grade

- Language Arts
- Math
- Problem Solving
- Science
- US History
- Physical Education/Health
- Specials (Music Appreciation, LAL Tech, Spanish & Skills for Success)

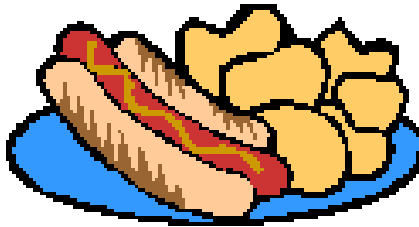
\* ESL



## 8<sup>th</sup> grade

- Language Arts/ English
- Math/ Algebra
- Problem Solving
- Science
- Geography
- Physical Education/Health
- Specials (Art, Multicultures, LAL Tech, Spanish)
- \* Spanish 1, ESL

# Lunch (12:15-12:53)



- Breakfast is important since the 6<sup>th</sup> grade begins lunch at 12:15.
- Full lunch is \$3.25. Extra portions are also available. Lunches can be pre-paid.
- I.O.U. is available if a student forgets a lunch.
- Snacks are sold at the snack bar. (\$.75- \$1.50)
- Students sit with their homeroom during lunch.
- Bathrooms are open during lunch.



# Phone Calls



- **Cell phones:** If a cell phone is visible during school hours, it will be confiscated. Cell phones should be **turned off** and **locked** in the student's locker. Cell phones will only be returned to a parent/ guardian. Consequences will be given.
- Please communicate with your child before they leave for school in the morning.
- Calling the MS to relay a message should only be done for emergencies.

# Dress Code

Please refer to the student planner for all the regulations of the Student Dress Code.



## Examples:

Flip-flops are prohibited.

No headbands, bandannas, chains and/or large jewelry are to be worn.

Short shorts and tops are not permitted.

No hats, sunglasses or outside jackets are to be worn in the building.

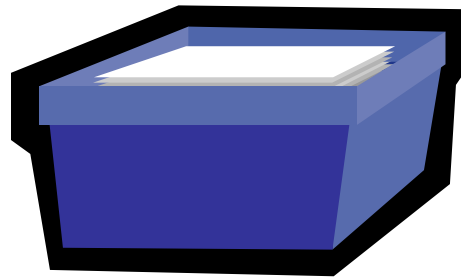
Students are not permitted to wear clothing that is clearly sleepwear.

Ripped jeans are prohibited.

Clothing should fit appropriately.

“I lost my...”

- Lost and Found bins are located outside the cafeteria.



- Students should not bring anything valuable to school.  
(I-pods, PSPs, cameras, jewelry, etc.)

# Lost and Found, June 2010



# Early Pick-Up

- If you are picking up your child early from school, please send them in with a note in the morning.
- When you come to pick up your son or daughter, please have identification with you.
- Students can only be picked up by people listed on the emergency card.



# Late buses



- Used for after school help, after school meetings and detention. (Not for visiting the public library.)
- Students must have permission to ride the late buses.
- Late buses depart at approximately 3:35 from the middle school.
- Bus stops are different from the morning/ afternoon stops. Please check the website for these stops.
- Late bus runs will transport MS and HS students.



# Technology/ Information

- Students receive user codes and passwords to use the school computers.
- Student/Parent checklists (**blue sheet**) will be distributed on the first day. **Please sign and return these forms as soon as possible.**
- Please check the district website and MS website for information.

[www.sayrevillek12.net](http://www.sayrevillek12.net) [www.sayrevillemiddle.net](http://www.sayrevillemiddle.net)



# Activities

Assemblies

Socials

Field Day



Parent involvement is always welcome.

Many of these activities are sponsored and supported by the PTO.



# Get Involved...

- Soccer
- Cross Country \*
- Field Hockey\*
- Basketball
- Wrestling\*
- Cheerleading\*
- Softball\*/ Baseball
- School Musical\*
- Floor Hockey Club\*
- Community Service Club\*
- Odyssey of the Mind\*
- Literary Magazine\*
- Chorus\*/ Instrumental\*
- Band\*/ String Orchestra/ Marching Band
- Student Council
- Arts Middle School\*
- Step Squad\*
- Wise Times Newspaper\*
- Track Club\*
- Book of the Month Club\*
- Game It Up\*

Announcements will be made regarding these clubs and teams or check the board in the foyer.

\*6<sup>th</sup> Grade students are eligible for these activities.

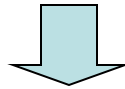
Some of the above activities are sponsored by the PTO and/or Recreation Department.

# Questions/ Concerns

Contact your child's teacher.

(Call the main office to leave a message or e-mail them.

E-mail addresses can be found on the SMS website.)



Contact the Guidance Department.

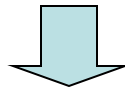
Secretary: Mrs. Peterson: 732-525-5290 Ext. 5534

Counselor: Mrs. Runfolo-Mc Cormack Ext. 5520

Ms. Gibson Ext. 5298

Student Assistance Counselor

Mrs. Consulmagno 732-525-5290 Ext. 5556



Administration

Ms. Maher (VP), Mr. Squitieri (VP), Ms. Jakubik (Principal)



Welcome to the  
Sayreville  
Middle School



First Day: September 7<sup>th</sup>.

Back to School Night: September 22<sup>nd</sup>.